

C o m  
p o s  
i t e

# Pietre Incise



PIETRA GRAIA



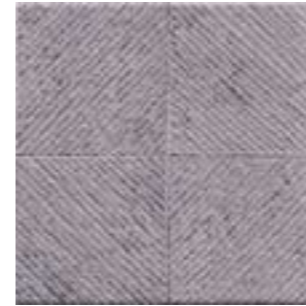
30x30 (12"x12")	<b>GX26</b>	54
15x15 (6"x6")	<b>GX42</b>	68
10x10 (4"x4")	<b>GK13</b>	83

PIETRA DOLOMITICA



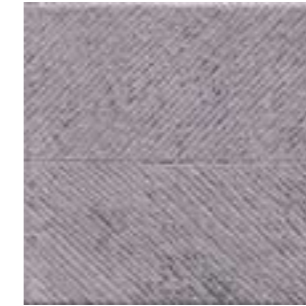
30x30 (12"x12")	<b>GW92</b>	54
15x15 (6"x6")	<b>GY13</b>	68
10x10 (4"x4")	<b>GK12</b>	83

MARCIAPIEDE PIETRA GRAIA



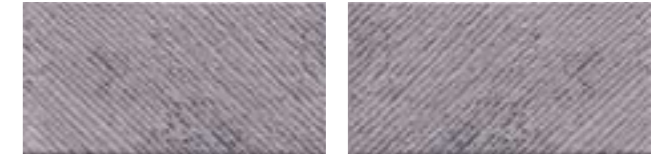
30x30 (12"x12")	<b>GW96</b>	56
-----------------	-------------	----

PERCORSO PIETRA GRAIA



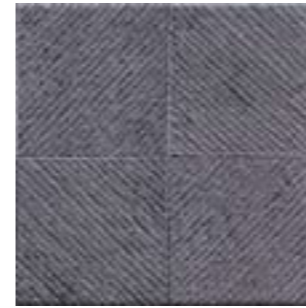
30x30 (12"x12")	<b>GW95</b>	56
-----------------	-------------	----

ZOCOLO PIETRA GRAIA MIX2



15x30 (6"x12")	<b>GY73</b>	62
----------------	-------------	----

MARCIAPIEDE PIETRA RETICA



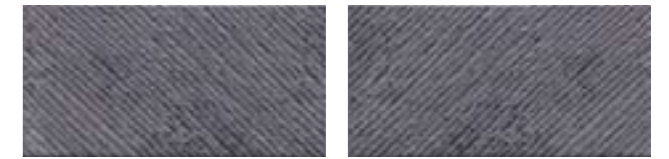
30x30 (12"x12")	<b>GW91</b>	56
-----------------	-------------	----

PERCORSO PIETRA RETICA



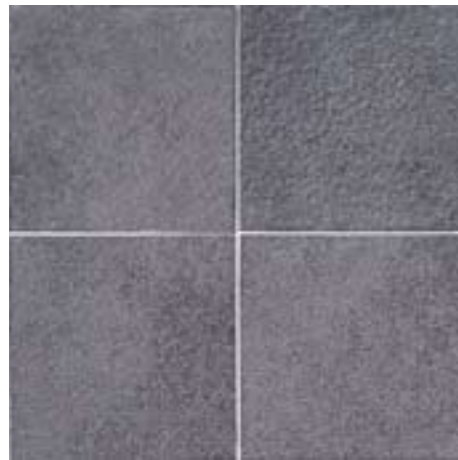
30x30 (12"x12")	<b>GW90</b>	56
-----------------	-------------	----

ZOCOLO PIETRA RETICA MIX2



15x30 (6"x12")	<b>GY74</b>	62
----------------	-------------	----

PIETRA RETICA



30x30 (12"x12")	<b>GX28</b>	54
15x15 (6"x6")	<b>GX43</b>	68
10x10 (4"x4")	<b>GK14</b>	83

PIETRA ATESINA



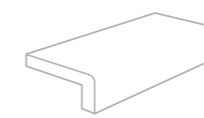
30x30 (12"x12")	<b>GX27</b>	56
15x15 (6"x6")	<b>GX40</b>	72
10x10 (4"x4")	<b>GK11</b>	86

Pezzi speciali - Trim tiles - Pieces speciales - Formteile - Speciale delen - Спецэлементы



Battiscopa  
9,5x30 (3<sup>7</sup>/<sub>8</sub>"x12")

ATESINA	<b>GY70</b>	14	●
DOLOMITICA	<b>GY69</b>	14	●
GRAIA	<b>GY67</b>	14	●
RETICA	<b>GY68</b>	14	●



Elemento Elle Monolitico  
16,5x30 (6<sup>3</sup>/<sub>4</sub>"x12")

ATESINA	<b>GY43</b>	18	▲
DOLOMITICA	<b>GY44</b>	18	▲
GRAIA	<b>GY45</b>	18	▲
RETICA	<b>GY46</b>	18	▲

9,5 mm



30x30  
(12"x12")

9,5 mm



15x30  
(6"x12")

9,5 mm



15x15  
(6"x6")

9,5 mm



10x10  
(4"x4")

R11  
A  
A+B  
A+B+C

Si consiglia una posa con fuga di 4 mm - We suggest a 4 mm of gap - Nous conseillons une pose avec des joints de 4 mm - Fliesen wird eine fugue von 4 mm empfohlen - Het wordt aanbevolen de tegels te leggen met een voeg van 4 mm - Рекомендується кладка с зазором 4 мм